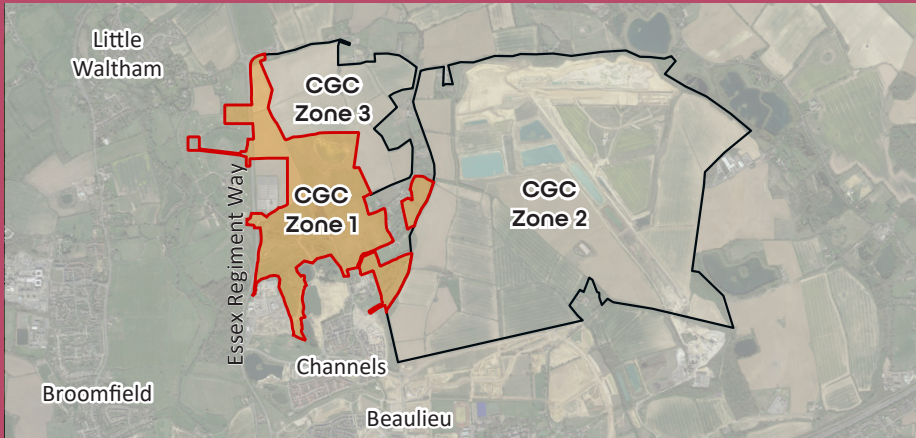




Chelmsford
Garden
Community

You are invited to view an Online Public Exhibition for
The CGC Zone 1 Planning Application
from Monday 22 August 2022

Zoom Introduction Presentation and Q&A
6pm - 8pm, Monday 22 August 2022



What Is Being Consulted Upon?

The first of three Planning Applications for Chelmsford Garden Community (CGC), known as Zone 1. The Application is being brought forward by Ptarmigan Land in accordance with the emerging **CGC Development Framework Document (DFD)** which sets out the Vision and Framework for the Garden Community. It will also comply with the **Infrastructure Delivery Plan (IDP)** which sets out what infrastructure needs to be delivered, by whom, when and at what cost and will be governed by an overarching legally binding **Planning Framework Agreement (PFA)**.

Have your say!

chelmsfordgardencommunity.co.uk

information will go live on Monday 22 August 2022

The Chelmsford Garden Community engagement process is being organised by JTP on behalf of Ptarmigan Land, part of the Chelmsford Garden Community Consortium. For more information, please visit chelmsfordgardencommunity.co.uk (information will go live on Monday 22 August 2022) or contact the JTP community planning team at community@jtp.co.uk or on Freephone 0800 0126 730.



PTARMIGAN LAND

jtp



Online Public Exhibition – Zone 1 Planning Application

from Monday 22 August 2022

Zoom Introduction Presentation and Q&A

6pm - 8pm, Monday 22 August 2022

Background

The masterplanning and promotion of the Garden Community is being led by a Developer Consortium in collaboration with Chelmsford City Council (CCC) and Essex County Council (ECC).

A Development Framework Document, which sets out the principles of the new community's land uses, access, and landscaping principles, has been submitted to CCC for their approval.

The Infrastructure Delivery Plan, which sets out the framework for what infrastructure needs to be provided is also pending approval by CCC.

Vision

Chelmsford Garden Community will be a thriving new settlement combining the best of town and country living. It will deliver new homes, jobs, schools, recreational facilities and high quality open spaces for people and nature. It builds on the successful new neighbourhoods of Beaulieu and Channels to meet the needs of the growing City.

The Garden Community is designed in collaboration with new and existing residents, with opportunities for the community to engage in long-term stewardship, ultimately contributing to the legacy of a sustainable community.

Have your say!

The Chelmsford Garden Community engagement process is being organised by JTP on behalf of Ptarmigan Land, part of the Chelmsford Garden Community Consortium. For more information, please visit chelmsfordgardencommunity.co.uk (information will go live on Monday 22 August 2022) or contact the JTP community planning team at community@jtp.co.uk or on Freephone 0800 0126 730.



PTARMIGAN LAND



CGC - Zone 1 Planning Application

Have your say!

Live Zoom Introduction Presentation

On the first evening of the online exhibition, 6pm - 8pm, Monday 22 August 2022, we will hold an introductory Zoom presentation followed by Questions & Answers. Please email community@jtp.co.uk to register your attendance. A Zoom meeting link will then be provided. The Zoom presentation will be recorded and uploaded to the Garden Community webpage for subsequent viewing.

Online Public Exhibition

We would like to hear your views about the proposals set out in the exhibition. Please visit chelmsfordgardencommunity.co.uk (information will go live on Monday 22 August 2022) to view the exhibition. You can make comments via the online form or by writing them below and sending the postcard back to us by Freepost - no stamp required. The deadline for comments is **Friday 30 September 2022**. If you would like a printed copy of the exhibition please contact JTP with your name and postal address and we will send one to you.

I have viewed the Chelmsford Garden Community Zone 1 public exhibition (22 August - 30 September 2022) and have the following comments ...

Name *(optional)* ----- Email *(optional)* -----

Age *(optional)* ----- Postcode *(optional)* -----

Thank you for taking time to complete this questionnaire. We will collate the comments received and they will help shape the planning application for CGC Zone 1.

Personal data protection JTP will retain your personal contact details in order to communicate with you about Chelmsford Garden Community. We may share your personal details with the project team but not with any other third parties.

Full details of how we process, manage and retain your personal information can be found online in our Privacy Notice at jtp.co.uk/projects/community-planning. To opt out of receiving future updates about Chelmsford Garden Community, please email us at optout@jtp.co.uk or write to us at **Freepost JTP** (no stamp or any other address details required).



PTARMIGAN LAND

jtp

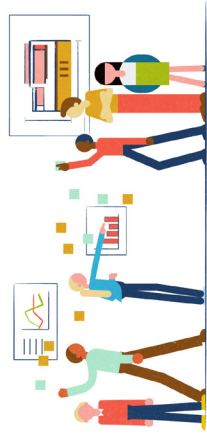


Chelmsford
Garden
Community

Chelmsford Garden Community Online Public Exhibition – Zone 1 Planning Application



return to
Freepost JTP



For more information, please visit chelmsfordgardencommunity.co.uk (information will go live on Monday 22 August 2022)
or contact the JTP community planning team at community@jtp.co.uk or on **Freephone 0800 0126 730**.