



Chelmsford  
Garden  
Community

# Chelmsford Garden Community

## Public Exhibition Online

from Thursday 11 November 2021

## Zoom Introduction Presentation and Q&A

7pm - 8pm, Thursday 11 November 2021



### Online Public Exhibition

You are invited to view and comment on the emerging proposals for Chelmsford Garden Community. The online exhibition will be available at

**[chelmsfordgardencommunity.co.uk](https://chelmsfordgardencommunity.co.uk)**

(website will go live on 11 November 2021)

and will include the emerging plans and proposals that will form part of a Development Framework Document (DFD).

You will then be able to make comments via the online comment form or by using the attached Freepost postcard - no stamp required. The deadline for comments is

**Monday 22 November 2021.** Printed

copies of the exhibition in A3 bound book format will be available to view at Little Channels and at the Beaulieu Community Centre. If you would like a printed copy of the exhibition please contact JTP with your name and postal address and we will send one to you.

### Live Zoom Introduction Presentation

On the first evening of the online exhibition, 7pm Thursday 11 November, we will hold an introductory Zoom presentation followed by Questions & Answers. Please email **[community@jtp.co.uk](mailto:community@jtp.co.uk)** to register your attendance. A Zoom meeting link will then be provided. The Zoom presentation will be recorded and uploaded to the Garden Community webpage for subsequent viewing.

## Have your say!

# [chelmsfordgardencommunity.co.uk](https://chelmsfordgardencommunity.co.uk)

website will go live on 11 November 2021

The Chelmsford Garden Community masterplanning engagement process is being organised by JTP on behalf of the Chelmsford Garden Community consortium. For more information, please visit **[chelmsfordgardencommunity.co.uk](https://chelmsfordgardencommunity.co.uk)** (website will go live on 11 November 2021) or contact the JTP community planning team at **[community@jtp.co.uk](mailto:community@jtp.co.uk)** or on **Freephone 0800 0126 730**.

jtp



# Chelmsford Garden Community

## Public Exhibition Online

from Thursday 11 November 2021

## Zoom Introduction Presentation and Q&A

7pm - 8pm, Thursday 11 November 2021

### Vision

Chelmsford Garden Community will be a thriving new settlement offering the best of town and country living. It will deliver new housing with healthy placemaking principles, new employment opportunities, a supporting movement network, social and recreational facilities and quality open spaces for people and nature. It will build on the success of the new neighbourhoods of Beaulieu and Channels and be a Garden Community that meets the needs of the growing City.

The Garden Community will be designed in collaboration with new and existing residents, with opportunities for the community to engage in long-term stewardship, ultimately contributing to the legacy of a sustainable community.

### Background

The masterplanning and promotion of the Garden Community is being led by a Developer Consortium Countryside Zest and Ptarmigan Land in collaboration with Chelmsford City Council (CCC) and Essex County Council (ECC).

The Local Plan requires the preparation of a comprehensive masterplan for the site which will take the form of a **Development Framework Document (DFD)** and an **Infrastructure Delivery Plan (IDP)**. The DFD will include an Illustrative Masterplan and supporting information which will guide future Outline Planning Applications.

# Chelmsford Garden Community Have your say!

We would like to hear your views about the proposals set out in the exhibition. Please visit [chelmsfordgardencommunity.co.uk](http://chelmsfordgardencommunity.co.uk) (website will go live on 11 November 2021) to view the exhibition. You can make comments via the online form or by writing them below and sending the postcard back to us by Freepost - no stamp required. The deadline for comments is **Monday 22 November 2021**.

I have viewed the Chelmsford Garden Community public exhibition (11-22 November 2021) and have the following comments ...

Name *(optional)* \_\_\_\_\_ Email *(optional)* \_\_\_\_\_

Age *(optional)* \_\_\_\_\_ Postcode *(optional)* \_\_\_\_\_

Thank you for taking time to complete this questionnaire. We will collate the comments received and they will help shape the Development Framework Document (DFD).



# Have your say!

The Chelmsford Garden Community masterplanning engagement process is being organised by JTP on behalf of the Chelmsford Garden Community consortium. For more information, please visit [chelmsfordgardencommunity.co.uk](http://chelmsfordgardencommunity.co.uk) (website will go live on 11 November 2021) or contact the JTP community planning team at [community@jtp.co.uk](mailto:community@jtp.co.uk) or on **Freephone 0800 0126 730**.



**Personal data protection** JTP will retain your personal contact details in order to communicate with you about Chelmsford Garden Community. We may share your personal details with the project team but not with any other third parties.

Full details of how we process, manage and retain your personal information can be found online in our Privacy Notice at [jtp.co.uk/projects/community-planning](http://jtp.co.uk/projects/community-planning). To opt out of receiving future updates about Chelmsford Garden Community, please email us at [optout@jtp.co.uk](mailto:optout@jtp.co.uk) or write to us at Freepost JTP (no stamp or any other address details required).

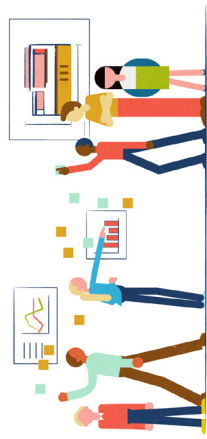


Chelmsford  
Garden  
Community

# Chelmsford Garden Community Public Exhibition



return to  
**Freepost JTP**



The Chelmsford Garden Community masterplanning engagement process is being organised by JTP on behalf of the Chelmsford Garden Community consortium. For more information, please visit [chelmsfordgardencommunity.co.uk](https://chelmsfordgardencommunity.co.uk) (website will go live on 11 November 2021) or contact the JTP community planning team at [community@jtp.co.uk](mailto:community@jtp.co.uk) or on **Freephone 0800 0126 730**.